

HUMAN SECURITY SOLUTIONS/SYSTEMS

EXPERT ON HUMAN SECURITY SINCE 2009



FAST PASS



CLEAR IMAGE



SAFE SCAN

SOLUTIONS FOR EVERY APPLICATIONS



Correction Security



Mining Industry



Public Transportation



Bank & Finance



Public Events



Data Center



Industry Security



Government & VIP Protection

KEY DETECTION TECHNOLOGIES



Micro Dose X-ray Technology: transmission screening in lower dose per scan: $\leq 0.20\mu\text{Sv}$



Autowalk Life Design: continuously circular belt design with high throughput rate of 1200 people per hour



Ultra Clear Image: higher resolution with no image distortion and with color-enhancement



Ultra-Fast: <math>< 3</math> seconds per scan

MICRO DOSE TECHNOLOGY ENSURES SAFETY



ANSI/HPS N43.17-2009 Standard: dose limitation $\leq 0.25\mu\text{Sv}$.



IEC62463 Edidon 1.0 2010-06 Standard: dose limitation $\leq 5\mu\text{Sv}$.



CE certification of all sharpshooter 5010 series and products



Chinese National Standard GB 15208.4-2018 and Industry Standard GA926-2011 $\leq 0.5\mu\text{Sv}$.

ISO9001:2015
ISO45001:2018
ISO14001:2015

Sharpshooter X-Ray Full Body Scanner System



KEY FEATURES

Full Body: internal and external threat detection of metallic & non-metallic objects including drugs, weapons, knives, explosives, liquids, electronic devices, precious stones & rare metals



Micro Dose for Safety: transmission screening in lower dose per scan: $< 0.20\mu\text{Sv}$

ULTRA = Ultra-Fast: < 3 seconds per scan



Autowalk Like Design: continuously circular belt design over 1200 people per hour



Ultra Clear Image: higher resolution with no image distortion



Easy Installation: only 3-joint construction for fast installation and easy alignment.

APPLICATIONS

- **Law Enforcement:** prisons, police and narcotics agency
- **Public Transportation:** train station, ports, airports and customs
- **Mining & Industrial Theft:** gold mine, jewelry shop, and electronic factories
- **Governmental & Public Safety:** parliaments, courts, entertainment & sport events and public gatherings



Physical Characteristics	
Weight	800kg
Dimensions	2610mm×2300mm×2600mm (L×W×H)
Working Temperature	-5°C~40°C
Relative Humidity	0%~90% non-condensing.
Storage Temperature	-10°C to 45°C
Power Consumption	800W
Input Voltage range:	180~240V AC
Input AC Frequency	50±3 Hz
Performance	
Scanning Height	2 m
Single Inspection Dose	<0.2μSv
X-ray Leakage	<0.19μSv/h, at any point 50cm from any external surface of the system
Wire Detectability	AWG38
Spatial Resolution	1.0mm
Contrast Sensitivity	0.5%
Single Scan time	< 4 seconds
Throughput	≥1000 persons per hour
Sound Pressure Level	<55dB
Conveyor Speed	0.17m/s



Complied with ANSI and IEC, Surpasses Industry Standard with: **0.05-0.2 μSv.**

ANSI/HPS N43.17-2009 Standard: dose limitation ≤ **0.25μSv.**



IEC62463 Edition 1.0 2010-06 Standard: dose limitation ≤ **5μSv.**



Chinese National Standard GB15208.4-2018 and Industry Standard GA926-2011 ≤ **0.5μSv.**

Image Presentation	
Monitor	Special color TFT monitor with 24-inch LCD display, with high resolution of 1920×1200
Image capture	Real time image capture
Image color	B/W, color overlay
Image Manipulation	zoom, super enhancement, detail enhancement, B/W reverse, filter, pseudo color, brightness/contrast
Image Retrieve	Saved screening image could be retrieved by operator's ID, captured time and etc.,.
Image storage	1,000,000 pictures (support bmp, jpeg, tiff, png and other forms; support USB transmit)
Other Specifications	
Construction	3-joint construction
Inspection mode	Open-type continuous cyclic detection
Patents	Completely independent patents
Standard	Meet with ANSI/HPS N43.17-2009, and IEC62463 Edition 1.0 2010-06
Warranty	1 year
Option	
Lead shield ID recognition system Face recognition system	

Sharpshooter X-Ray Full Body Scanner System



KEY FEATURES



Full Body: internal and external threat detection of metallic & non-metallic objects including drugs, weapons, knives, explosives, liquids, electronic devices, precious stones & rare metals



Micro Dose for Safety: transmission screening in lower dose per scan: <math>< 0.20\mu\text{Sv}</math>

ULTRA = Ultra-Fast: <math>< 3</math> seconds per scan



Autowalk Like Design: continuously circular belt design over 1200 people per hour



Ultra Clear Image: higher resolution with no image distortion



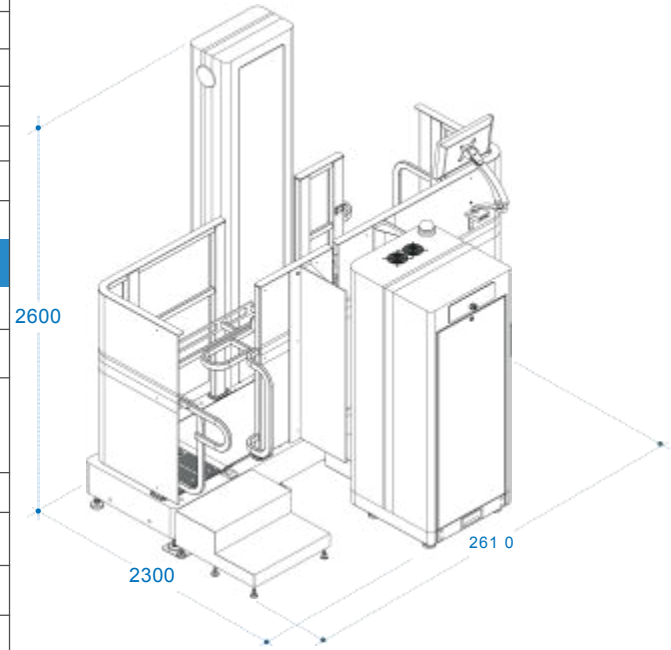
Easy Installation: only 3-joint construction for fast installation and easy alignment.

APPLICATIONS

- **Law Enforcement:** prisons, police and narcotics agency
- **Public Transportation:** train station, ports, airports and customs
- **Mining & Industrial Theft:** gold mine, jewelry shop, and electronic factories
- **Governmental & Public Safety:** parliaments, courts, entertainment & sport events and public gatherings



Physical Characteristics	
Weight	1000kg
Dimensions	2610mm×2300mm×2600mm (L×W×H)
Operating Temperature	-5°C~40°C
Relative Humidity	0%~90% non-condensing.
Storage Temperature	-10°C to 45°C
Power Consumption	800W
Input Voltage range	180~240V AC
Input AC Frequency	50±3 Hz
Performance	
Scanning Height	2.1 m
Single Inspection Dose	<0.2μSv
X-ray Leakage	<0.17μSv/h, at any point 50cm from any external surface of the system
Wire Detectability	AWG40
Spatial Resolution	1.0mm
Contrast Sensitivity	0.5%
Single Scan Time	<4 seconds
Throughput	≥1200 persons per hour
Sound Pressure Level	<54dB
Conveyor Speed	0.17m/s



Complied with ANSI and IEC, Surpasses Industry Standard with: **0.05-0.2 μSv.**

ANSI/HPS N43.17-2009 Standard: dose limitation **≤ 0.25μSv.**



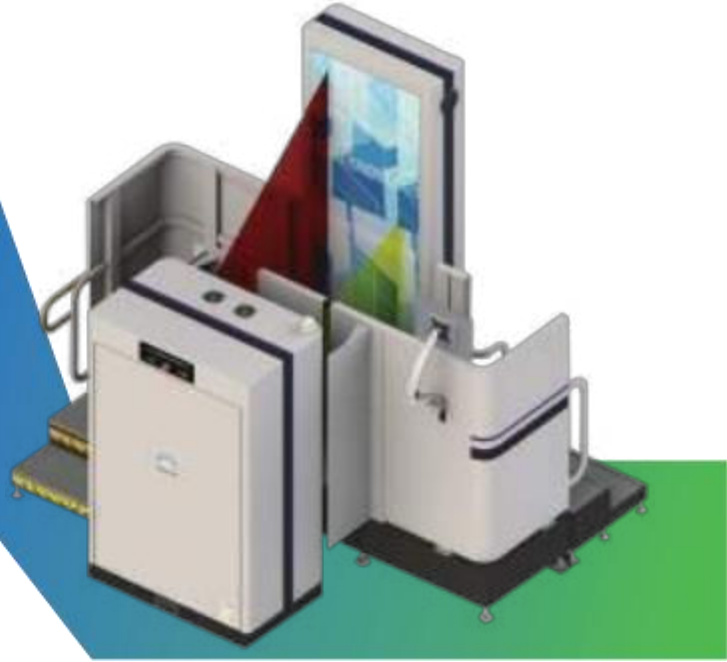
IEC62463 Edidon 1.0 2010-06 Standard: dose limitation **≤5μSv.**



Chinese National Standard GB15208.4-2018 and Industry Standard GA926-2011 **≤0.5μSv.**

Image Presentation	
Monitor	Special color TFT monitor with 24-inch LCD display, with high resolution of 1920×1200
Image Capture	Real time image capture
Image Color	B/W, color overlay
Image Manipulation	Zoom, super enhancement, detail enhancement, B/W reverse, filter, pseudo color, brightness/contrast
Image Retrieve	Saved screening image could be retrieved by operator's ID, captured time and etc.,.
Image Storage	1,000,000 pictures (support bmp, jpeg, tiff, png and other forms; support USB transmit)
Other Specifications	
Construction	3-joint construction
Inspection Mode	Open-type continuous cyclic detection (independent patent)
Patents Standard	Completely independent patents Meet with ANSI/HPS N43.17-2009, and IEC62463 Edition1.0 2010-06
Warranty	1 year
Options	
Dual view for the whole body and the stomach	
ID recognition system	
Face recognition system	

Sharpshooter X-Ray Full-Body Scaneer System (Dual view)



KEY FEATURES



Dual View Detection: internal and external & head to toe detection



Micro Dose Safety: lower dose per scan (less than 0.20 μ Sv) complies and exceeds ANSI/HPS and IEC 's dose limitation

ULTRA = **Fast and High Throughput:** less than 4 s/scan;



Autowalk Movement: over 1200 People per hour.



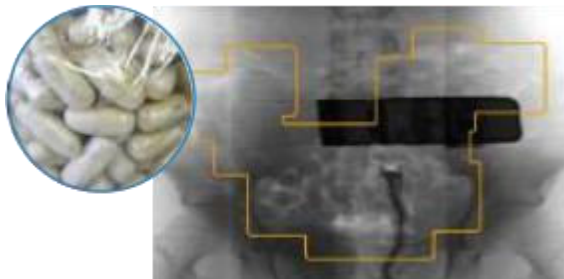
HD Image: clearer image with higher detectability, 40AWG (0.0787)



Metallic & Non-Metallic Objects: drugs, weapon, explosives, minerals, jewelry, and etc.



Easy Installation: Simple 3-joints construction for fast installation



APPLICATIONS

- Prisons and correctional facilities
- Customs and border crossings
- Government and courts
- Military facilities and traffic points
- Mines and industrial security
- Public buildings and events venues

Physical Characteristics	
Weight	1000kg
Dimensions	3100mm×2400mm×2600mm (L×W×H)
Operating temperature	-5°C~40°C
Relative humidity	0%~90% non-condensing.
Storage temperature	-10°C to 45°C
Power	1000W
Input voltage range:	180~240V AC
Input AC frequency	50/60 Hz
Scanning area	2000 mm(H)×1600mm(W) (Full body) 600 mm(H)×1600mm(W) (Torso area)
Performance	
Single inspection dose	< 0.20 μSv (Full body) < 2 μSv (Torso area)
X-ray leakage	<0.17μSv/h, at any point 50cm from any external surface of the system
Wire detectability	AWG38 (Single View) AWG40 (Dual View)
Spatial resolution	1.0mm
Contrast sensitivity	0.5%
Single scan time	< 4 seconds
Throughput	>1200 persons per hour
Sound Pressure Level	<54dB
Conveyor speed	0.17m/s



Complied with ANSI and IEC, Surpasses Industry Standard with: **0.05-0.2 μSv.**

ANSI/HPS N43.17-2009

Standard: dose limitation **≤ 0.25μSv.**



IEC62463 Edition 1.0 2010-06

Standard: dose limitation **≤ 5μSv.**



Chinese National Standard GB15208.4-2018 and Industry Standard GA926-2011 **≤ 0.5μSv.**

Image Presentation	
Monitor	Special color TFT monitor with 24-inch LCD display, with high resolution of 1920×1,200
Image capture	Real time image capture
Image color	B/W, color overlay
Image manipulation	zoom, super enhancement, detail enhancement, B/W reverse, filter, pseudo color, brightness/contrast
Image retrieve	Saved screening image could be retrieved by operator's ID, captured time and etc.,.
Image storage	1,000,000 pictures (support bmp, jpeg, tiff, png and other forms; support USB transmit)
Other Specifications	
Construction	3-joint construction
Inspection mode	Open-type continuous cyclic detection (independent patent)
Patents Standard	Completely independent patents Meet with ANSI/HPS N43.17-2009, and IEC62463 Edition 1.0 2010-06
Warranty	1 year
Options	
Automatic intellectual detection ID recognition system Face recognition system	

Sharpshooter Dual Channel Full Body & Baggage Scanner System



KEY FEATURES



One Stop Inspection: inspect full body and baggage simultaneously



Full Body: internal and external threat detection of metallic & non-metallic objects including drugs, weapons, knives, explosives, liquids, electronic devices, precious stones & rare metals



MICRO Micro Dose for Safety: transmission screening in lower dose per scan: $< 0.20\mu\text{Sv}$



ULTRA Ultra-Fast: < 4 seconds per scan



Autowalk Like Design: continuously circular belt design over 1000 people per hour

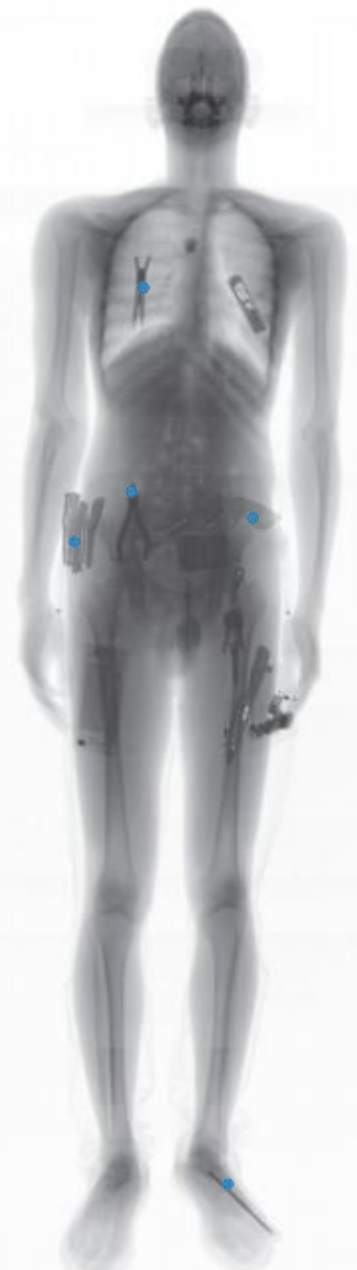


HD Ultra Clear Image: higher resolution with no image distortion

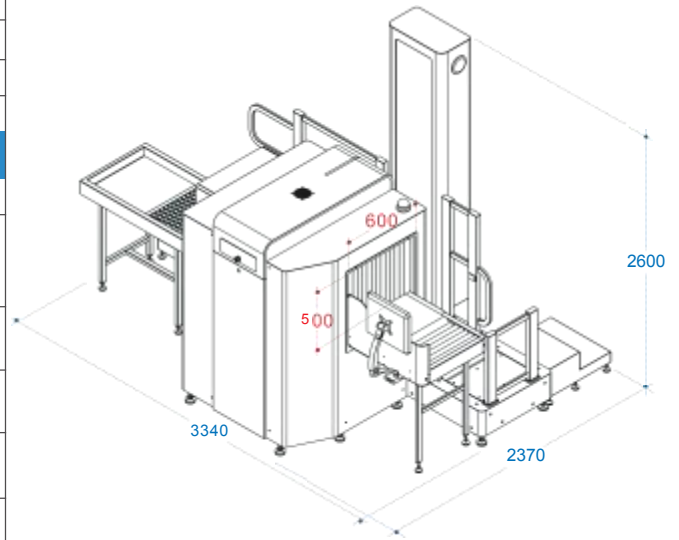


APPLICATIONS

- **Law Enforcement:** prisons, police and narcotics agency
- **Public Transportation:** train station, ports, airports and customs
- **Mining & Industrial Theft:** gold mine, jewelry shop, and electronic factories
- **Governmental & Public Safety:** parliaments, courts, entertainment & sport events and public gatherings



Physical Characteristics	
Weight	1300kg
Dimensions	Overall: 3340mm×2370mm×2600mm (L×W×H) Baggage tunnel: 650mm×500mm(L×W×H)
Operating Temperature	-5°C~40°C
Relative Humidity	0%~90% non-condensing.
Storage Temperature	-10°C ~ 45°C
Power Consumption	1200W
Input voltage range:	180~240V AC
Input AC Frequency	50±3 Hz
Performance	
Scanning height	2m
Single inspection dose	For human body: < 0.20 μSv For luggage: < 3 μSv
X-ray leakage	For human body:<0.4μSv/h, at any point from any external surface of the system For luggage: <0.78μSv/h, at any point from 5cm of any external surface of the system
Wire detectability	For human body: AWG38 For luggage: AWG40
Spatial resolution	For human body: 1.3mm For luggage: 1.0mm
Contrast sensitivity	0.5%
Single scan time	≤3 seconds
Throughput	≥1000 persons per hour
Sound Pressure Level	<54dB
Conveyor speed	0.17m/s



Complied with ANSI and IEC, Surpasses Industry Standard with: **0.05-0.2 μSv.**



ANSI/HPS N43.17-2009 Standard: dose limitation ≤ **0.25μSv.**



IEC62463 Edidon 1.0 2010-06 Standard: dose limitation ≤ **5μSv.**

Chinese National Standard GB15208.4-2018 and Industry Standard GA926-2011 ≤ **0.5μSv.**

Image Presentation	
Monitor	DELL 17" + DELL 24" LCD display, with high resolution of 1920×1,200
Image capture	Real time image capture
Image color	B/W, color overlay
Image manipulation	Zoom, super enhancement, detail enhancement, B/W reverse, filter, pseudo color, brightness/contrast
Image retrieve	Saved screening image could be retrieved by operator's ID, captured time and etc..
Image storage	1,000,000 pictures (support bmp, jpeg, tiff, png and other forms; support USB transmit)
Other Specifications	
Construction	4-joint construction
Inspection mode	For human body: open-type continuous cyclic detection (independent patent)
Patents	Completely independent patents
Standard	Meet with ANSI/HPS N43.17-2009, and IEC62463 Edition1.0 2010-06
Warranty	1 year
Options	
ID recognition system	
Face recognition system	

Sharpshooter Mobile Torso Scanner



SQ5010-AB applies Qilotech's Micro Dose Technology to identify concealed metallic and non-metallic objects such as drugs, explosives, weapons, and other contraband inside of the torso part of the body. The system's mechanical arms can move vertically with effective inspection capability on the torso area. With ultra-clear image and mobility, the system is practical for anti-drug and anti-terrorism operations.

KEY FEATURES



Internal and External Threat Detection: metallic & non-metallic objects including drugs, weapons, knives, explosives, liquids, electronic devices, precious stones & rare metals



No Installation & Easy to Move: ready to use after plug-in, lightweight design for easy relocation based on different operational scenarios



Small Footprint: smaller size makes it easy to fit anywhere



Low Dose for Safety: transmission screening in lower dose per scan: $< 3\mu\text{Sv}$ Limit of $3\mu\text{Sv m}^2$



Ultra Clear Image: higher resolution with no image distortion



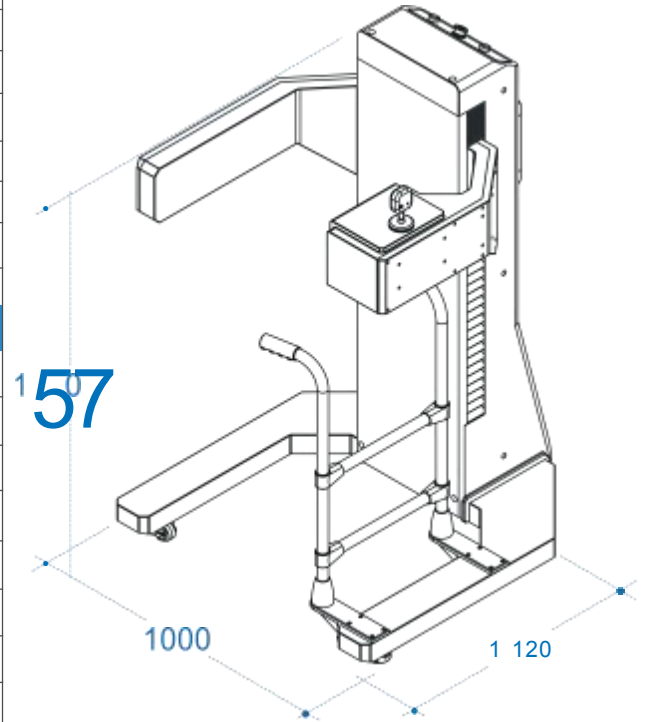
APPLICATIONS

- **Law Enforcement:** prisons, police and narcotics agency
- **Public Transportation:** train station, ports, airports and customs
- **Mining & Industrial Theft:** gold mine, jewelry shop, and electronic factories ■

Governmental & Public Safety: parliaments, courts, entertainment & sport events and public gatherings



Installation Information	
Weight	150kg
Dimensions	1120mm×1000mm×1570mm (L×W×H)
Working Temperature	-5°C~40°C
Storage Temperature	-10°C to 45°C
Relative Humidity	0%~90% non-condensing
Power Consumption	700W
Input Voltage Range:	180~240V AC
Generator Anode Voltage	120KV
Input AC Frequency	50±3 Hz
Performance	
Effective Scanning Area	0.75–1.25m from the ground
Single Inspection dose	<3μSv
Wire Detectability	AWG40
Data Bit	16 Bit
Spatial Resolution	1.0mm
Contrast Sensitivity	0.5%
Single Scan Time	10–15 seconds
Sound Pressure Level	<54dB
Safety Zone	2 meters from the system
X-Ray leakage	Average of 0.14μSv/h at any side of the operation site; Average of 0.58μGy/h at any external surface of the system
Cooling Mode/Duty Cycle	Sealed Oil Cooling/100%
Communication Distance	Standard 10 meters by cable (can be prolonged up to 100 meters)



Complied with ANSI and IEC, Surpasses Industry Standard with: **0.05-0.2 μSv.**

ANSI/HPS N43.17-2009 Standard: dose limitation **≤ 0.25μSv.**



IEC62463 Edition 1.0 2010-06 Standard: dose limitation **≤ 5μSv.**



Chinese National Standard GB15208.4-2018 and Industry Standard GA926-2011 **≤ 0.5μSv.**

Image Presentation	
IDisplay system	Core I5 processor, 8GB memory, 500GB hard drive, 24" Display
Image Manipulation	Image enhance, black/white imaging, select, zoom (adjustable and support continuous zoom in)
Image Playback	50 Checked Images Playback
Image Retrieve	Saved screening image could be retrieved by operator's ID, captured time and etc.,.
Image Storage	1,000,000 pictures (support bmp, jpeg, tiff, png and other forms; support USB transmit)
Basic Functions	Time and date display, user management, system timing. Generator timing, auto start check, image storage and Index, maintenance, test and etc.
Patents Standard	Completely independent patents Meet with ANSI/HPS N43.17-2009, ASA/ISO 1600 Film Safety Standard, and IEC62463 Edition 1.0 2010-06. CE Certified
Warranty	1 year

Sharpshooter Limb Detector



SQ5010-LS1 uses Qilootech's Micro Dose X-Ray Technology to inspect people with contrabands concealed within bandage and cast of limbs. Most importantly, the system protects people with real disability by nondestructive inspection of bandage and cast. With our Ultra-Fast Technology, each scan only takes less than 4 seconds. The detection arm is able to rotate and move vertically to cater people with disability in different limb part with no need for extra movement.

KEY FEATURES



Fake Disability Concealment: to detect hidden contraband and threat concealed within bandage and casts

ULTRA = **Ultra-Fast:** < 4 seconds per scan



Threat Detection Capabilities: metallic & non-metallic objects including drugs, weapons, knives, explosives, liquids, electronic devices, precious stones & rare metals



No Installation & Easy to Move: ready to use after plug-in, lightweight design for easy relocation based on different operational scenarios



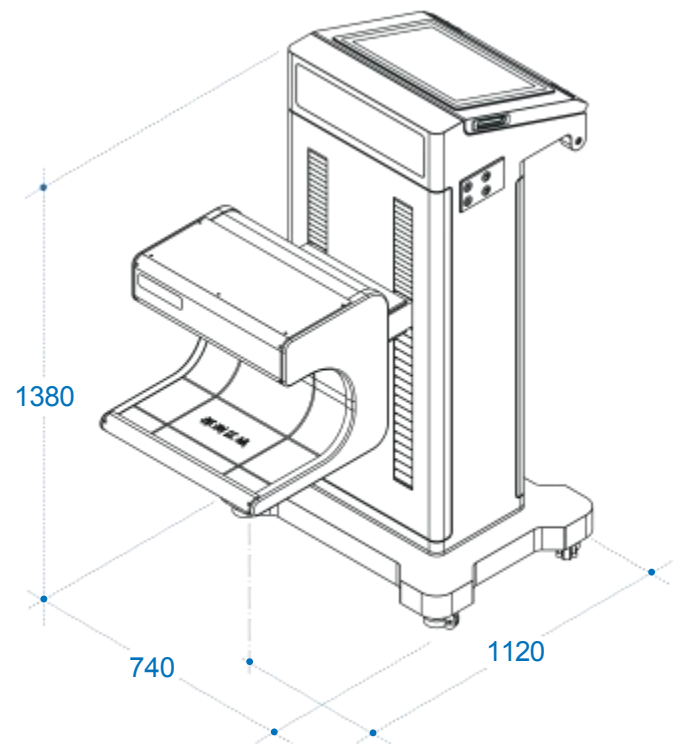
Small Footprint: smaller size makes it easy to fit anywhere



Low Dose for Safety: transmission screening in lower dose per scan: <math>< 0.25\mu\text{Sv}</math>

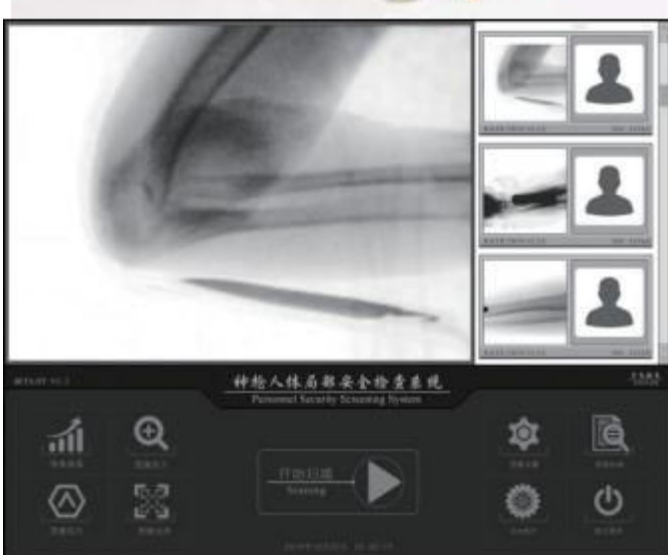


Ultra Clear Image: higher resolution with no image distortion



APPLICATIONS

- **Law Enforcement:** prisons, police and narcotics agency
- **Public Transportation:** train station, ports, airports and customs
- **Mining & Industrial Theft:** gold mine, jewelry shop, and electronic factories
- **Governmental & Public Safety:** parliaments, courts, entertainment & sport events and public gatherings



Basic Parameters	
Weight	190KG
Dimension	L 1120mm X W740mmX H1380mm
Working Temperature	-5°C~40°C
Storage Temperature	-10°C to 45°C
Relative Humidity	10%~90% non-condensing
Power Consumption	300W
Effective Inspection Range	250 mm
Maximum Inspection Width	180mm
Single Inspection Dose	<0.25μSv
Single Scan Time	<4s
Rotation Range of Detection Arm	≥ 180°
Wire Detectability	AWG38
Sound pressure level	< 65dB
Image Presentations	
Image Manipulation	Image enhance, black/white imaging, select, zoom(adjustable and support continuous magnification)
Image Playback	50 images playback
Image Storage	Minimum 100,000 images
System Basic Functions	Time and date display, user management, system timing, auto start check, X-ray beam timing, image Backup/Index. Maintenance, test, and etc.

Complied with ANSI and IEC, Surpasses Industry Standard with: **0.05-0.2 μSv.**



Chinese National Standard GB15208.4-2018 and Industry Standard GA926-2011 **≤0.5μSv.**



IEC62463 Edidon 1.0 2010-06 Standard: dose limitation **≤5μSv.**



ANSI/HPS N43.17-2009 Standard: dose limitation **≤ 0.25μSv.**

Sharpshooter X-ray Foot and Shoe Scanner



KEY FEATURES



No Shoe Off: detect from ankle to the bottom of the shoe without taking off shoes

ULTRA = Ultra-Fast: < 5 seconds per scan



Threat Detection Capabilities: metallic & non-metallic objects including drugs, weapons, knives, explosives, liquids, electronic devices, precious stones & rare metals



No Installation & Easy to Move: ready to use after plug-in, lightweight design for easy relocation based on different operational scenarios



Small Footprint: smaller size makes it easy to fit anywhere



Low Dose for Safety: transmission screening in lower dose per scan: <math>< 0.25\mu\text{Sv}</math>



Ultra Clear Image: higher resolution with no image distortion



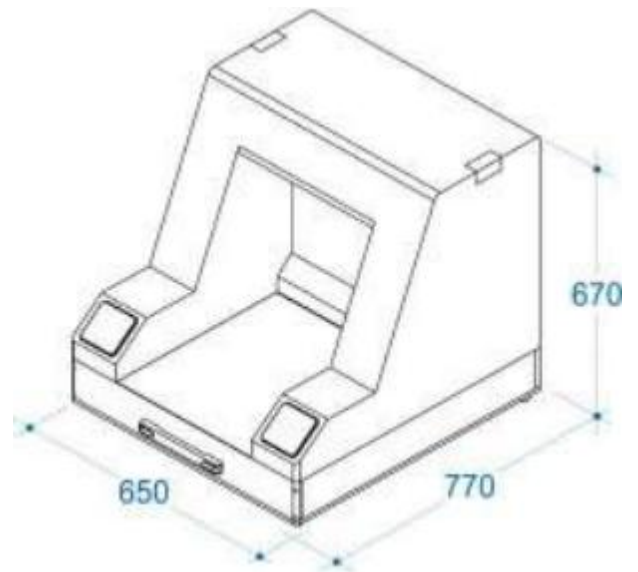
Ceramic Knife



APPLICATIONS

- **Law Enforcement:** prisons, police and narcotics agency
- **Public Transportation:** train station, ports, airports and customs
- **Mining & Industrial Theft:** gold mine, jewelry shop, and electronic factories
- **Governmental & Public Safety:** parliaments, courts, entertainment & sport events and public gatherings

Installation Information	
Weight	76KG
Dimensions	L770mm×W650mm×H670mm
Power Consumption	200W
Working Temperature	-5~40°C
Storage Temperature	-10°C to 45°C
Relative Humidity	0%~90% non-condensing
Effective Detection Range	L340mm×W300mm
Single Inspection Dose	≤0.5μSv
Single Scan time	<5 seconds
Display Terminal	15 Inch square screen + 12.3 inch rectangle screen
Spatial Resolution	1 mm
Wire Resolution	AWG38
Sound Pressure Level	65dB



Complied with ANSI and IEC, Surpasses Industry Standard with: **0.05-0.2 μSv.**



ANSI/HPS N43.17-2009 Standard: dose limitation ≤ **0.25μSv.**



IEC62463 Edidon 1.0 2010-06 Standard: dose limitation ≤ **5μSv.**







Chinese National Standard GB15208.4-2018 and Industry Standard GA926-2011 ≤ **0.5μSv.**

Image Presentation	
Imaging Mode	Black and white imaging
Image Manipulation	Continuous zoom in of 2-16 times
Image Playback	50 checked images playback
Image Storage	500GB, at least 100,000 images stored automatically
System Basic Functions	Date and time display, user management, system timing, power-on self-calibration, X-ray beam timing, image backup and query, maintenance and test, etc.
Patents	Completely independent patents
Standard	Meet with ANSI/HPS N43.17-2009, ASA/ISO 1600 Film Safety Standard, and IEC62463 Edition1.0 2010-06. CE Certified
Warranty	1 year

Sharpshooter X-Ray Full Body Scanner System



KEY FEATURES

-  **Mission Ready:** vehicle without installation for mobile outdoor security screening
-  **Highly Integrated System:** integrate full body screening, baggage scanning and other functions (Optional: liquid detection, face recognition, ID identification and other security equipment)
-  **Non Stop Inspection:** circular process and fast screening with clear imaging
-  **Detection Range:** including liquid, metallic and non-metallic contraband
-  **Pleasant Operator's Zone:** equipped with sofa, office cabinet, water dispenser, lightning and climate control system
-  **Dual Power Supplies:** equipped with independent gasoline generator and batteries

APPLICATIONS

- **Mobile Security Scanning:** border patrol and city inspection mission
- **Public Event Security:** entertaining, sport events and conference gathering
- **Anti-Sabotage & Terrorism:** flexible & outdoor screening and crowd control



Physical Characteristics	
Items	Vehicle Platform
Weight	5500kg
Dimensions	Overall size: L7600×W2500×H2950 (mm) Baggage tunnel: 650×500 (mm)
Working Temperature	-5°C~40°C
Relative Humidity	0%~90% non-condensing
Power Consumption	2000W
Power Source	110~240V AC/50±3Hz
Performance	
Inspection Range	Body scanning, baggage scanning, liquid detection. (Optional: explosive detection, radioactive material detection and etc.)
Single Inspection Dose	For human body: < 0.20μSy For luggage: < 3μSy
X-ray Leakage	For human body: < 0.40μSv/h, at any point from any external surface of the system
	For luggage: < 0.78μSv/h, at any point from 5cm of any external surface of the system
Wire Detectability	For human body: AWG38
	For luggage: AWG40
Spatial Resolution	For human body: 1.3mm
	For luggage: 1.0mm
Standard height of body screening	2.1m
Single Scan Time	≤ 3 seconds
Throughput	≥ 1000 persons per hour
Power	Electricity (lithium battery)



Interior Structure

Complied with ANSI and IEC, Surpasses Industry Standard with: **0.05-0.2 μSv.**



ANSI/HPS N43.17-2009 Standard: dose limitation ≤ **0.25μSv.**



IEC62463 Edidion 1.0 2010-06 Standard: dose limitation ≤ **5μSv.**



Chinese National Standard GB15208.4-2018 and Industry Standard GA926-2011 ≤ **0.5μSv.**

Image Presentation

Monitor	Special color TFT monitor with 24-inch LCD display, with high resolution of 1920×1200
Image capture	Real time image capture
Image color	B/W, color overlay
Image Manipulation	zoom, super enhancement, detail enhancement, B/W reverse, filter, pseudo color, brightness/contrast
Image Retrieve	Saved screening image could be retrieved by operator's ID, captured time and etc.,.
Image storage	1,000,000 pictures (support bmp, jpeg, tiff, png and other forms; support USB transmit)

Other Specifications

Construction	3-joint construction
Inspection mode	Open-type continuous cyclic detection
Patents	Completely independent patents
Standard	Meet with ANSI/HPS N43.17-2009, and IEC62463 Edition1.0 2010-06
Warranty	1 year

Option

ID recognition system
Face recognition system
Liquid Detector

Sharpshooter Covert Channel Scanner System



KEY FEATURES



Full Body: internal and external threat detection of metallic & non-metallic objects including weapons, knives, explosives, liquids, electronic devices



Micro Dose for Safety: transmission screening in micro dose per scan: $< 0.20\mu\text{Sv}$



Covert: embedded into building's entrance with a rapid and silent screening



Secretly Activated: activation as soon as the visitor ringing the visual-speaking system



Ultra Clear Image: real-time imaging with high resolution and no distortion



Highly Custom Made: apart from standard steel body and the inside scanner system, the channel's size, framework and decoration can be custom made



APPLICATIONS

- Private mansion, villa and houses for private security scanning
- High-end gated community security
- Embassy for visiting security scanning
- Major Banks for VIP protection
- Government Building for special security scanning

Technical Specifications	
Scanning Height	2.1 m
Single Inspection Dose	<0.2 μ Sv
Wire Detectability	AWG40
Spatial Resolution	1.0mm
Contrast Sensitivity	0.5%
Single Scan Time	<10 seconds
X-ray Leakage	<0.17 μ Sv/h, at any point 50cm from any external surface of the system
Image Capture	Real time image capture
Image Color	B/W, color overlay
Image Manipulation	Zoom, super enhancement, detail enhancement, B/W reverse, filter, pseudo color, brightness/contrast
Patents	Completely independent patents
Standard	Meet with ANSI/HPS N43.17-2009, and IEC62463 Edition1.0 2010-06
Warranty	1 year
Option	
Face recognition system	
ID recognition system	



Complied with ANSI and IEC, Surpasses Industry Standard with: **0.05-0.2 μ Sv.**



Chinese National Standard GB15208.4-2018 and Industry Standard GA926-2011 \leq **0.5 μ Sv.**



IEC62463 Edition 1.0 2010-06 Standard: dose limitation \leq **5 μ Sv.**



ANSI/HPS N43.17-2009 Standard: dose limitation \leq **0.25 μ Sv.**



Sharpshooter Portable Security Scanner System



Sharpshooter Portable Security Scanner System (SQ5010-BC) is a portable security screening system which can be easily and quickly deployed. The system is effective in the detection of wide ranged contraband such as explosive, drug and weapon concealed in the baggage and parcels. With customizable system options and high quality real-time X-Ray images, the system is capable for various operational scenarios. The portable system assists operators in making easy, accurate, and rapid decision especially in urgent and risky environment. //

KEY FEATURES



Portable: Light in weight, easy to carry.



Simple Deployment: less than 5 minutes.



High Detectability: strong penetration ability



Ultra Clear Image: real-time image & higher resolution with no image distortion.



Wireless: Complete wireless connection device



Detector Panels: three different panel sizes for option.



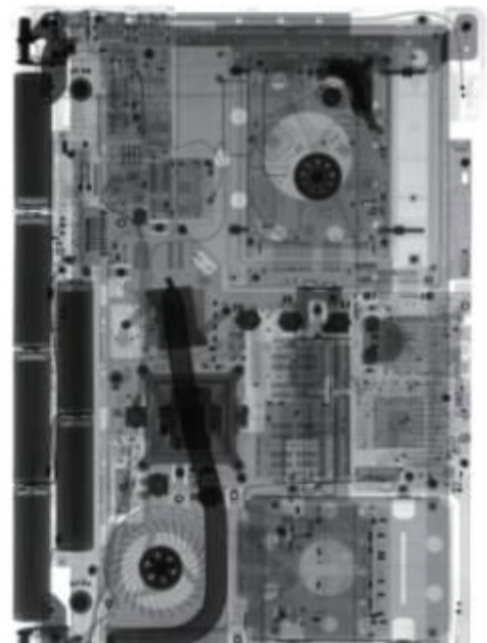
System Options: common laptop, ruggedized computer or pad system



Battery and Charger: plug-in rechargeable battery system to support longer stand-by time.

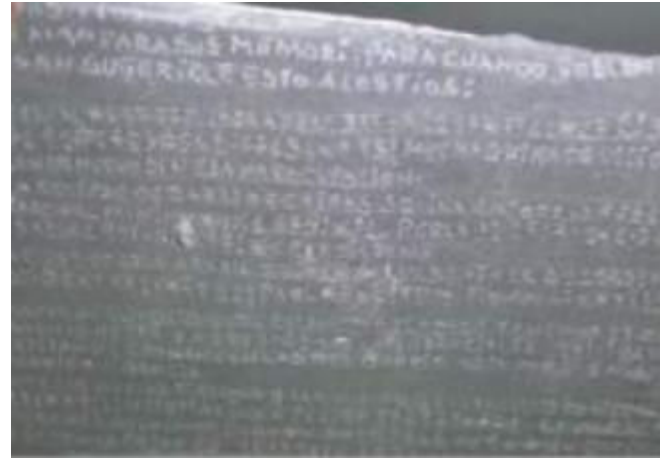
APPLICATIONS

- Special Force Operation
- Bomb Disposal Operation
- Customs & Boarder Inspection
- Governmental & Public Events Safet



Basic Parameters			
Detector Size	12"x10"	14"x17"	17"x17"
Active Area:	307mmx244mm	434mmx355mm	434mmx434mm
Size of Packing Case	62cm*49cm*30cm	62cm*49cm*30cm	79cm*59cm*34cm
Total Weight (Batteries include)	24kg	26kg	37kg
Temperature Range	-5°C~50°C		
Humidity Range	0~95%		
Power Consumption	500W		
Working Voltage	AC 180–240V		
Working Frequency	50–60Hz		
Performance			
Grey Scale	16 bits		
Pixel Size	154μm		
Wire Resolution	AWG42		
Spacial resolution	1.0mm		
Penetrability	30mm Steel Guaranteed, 34mm Typical		
Communication Port	Ethernet/WIFI		
Image Reading Time	4–6s		
X–Ray Leakage	<0.28μSv/h, at any point from 1 meter of any external surface of the system; Stray X–Ray leakage:0.9μSv/h at working site		
Tube Voltage of Generator	120kV		
Tube Current of Generator	0.1–1mA		
Stand–by Time	>4 hours		
Detector Material	Solid–state flat panel detector of x–ray digital radiography using amorphous silicon		
Image Presentations			
Display system	Ruggedized laptop or Pad with Intel Core I5 processor,8 GB RAM, 256 GB SSD Hard Disk and latest Operating System		
Basic Functions	Edge Enhancement, Color Reverse, Zoom–in/out, Horizontal/Vertical Rotation, Original, Pseudo 3D		
Image Storage	Image storage can be chosen or not		
Image Index	Images in storage can be indexed against parameters like operator ID, scanning time and etc		
Safety of Images	Only authorized personnel is allowed to delete image in storage.		
Network Communication	This system can be checked, controlled and troubleshoot in remote through standard network port		
Timing and Counting	Timing on system working hours, Counting numbers of detection		

Law Enforcement



A killing paper-note found in rectum of a releasing prisoner, A Prison in Central America.



A Prison in Saint Kitts

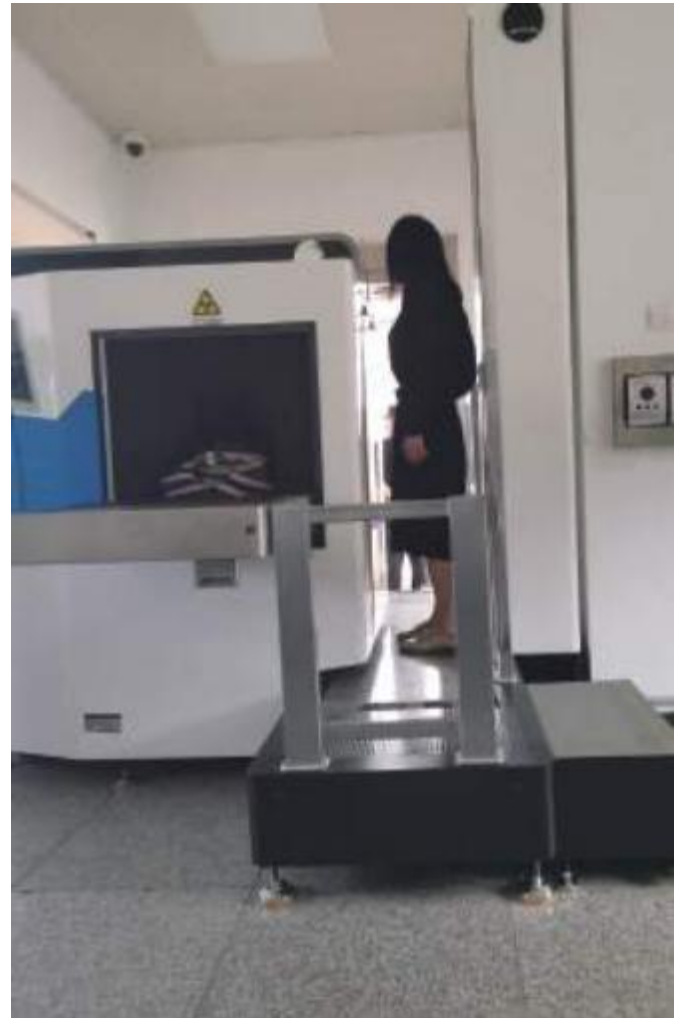


A Prison in Salvador

Mining Industry



A Coal Mine in China



A Mint in China



A Tungsten Ore Mine in China



A Gold Mine in China

Government & Public Events



Police Bomb Squad in Indonesia |



| A Parliament in Uganda



| A Commercial Building in Phillipine



| A Public Event in China

Public Transportation



| Full Body Scanner in an Airport of China



| Foot&Shoe Scanner in an Airport of China



| Limb Scanner in an Airport of China



| Mobile Torso Scanner in an Airport of China



AOKAI
GLOBAL

EXPERT ON HUMAN SECURITY SINCE 2009



TEL: +86 13910968133



Web: AOKAIGLOBAL.COM



Email: JES@CNAOKAI.COM

